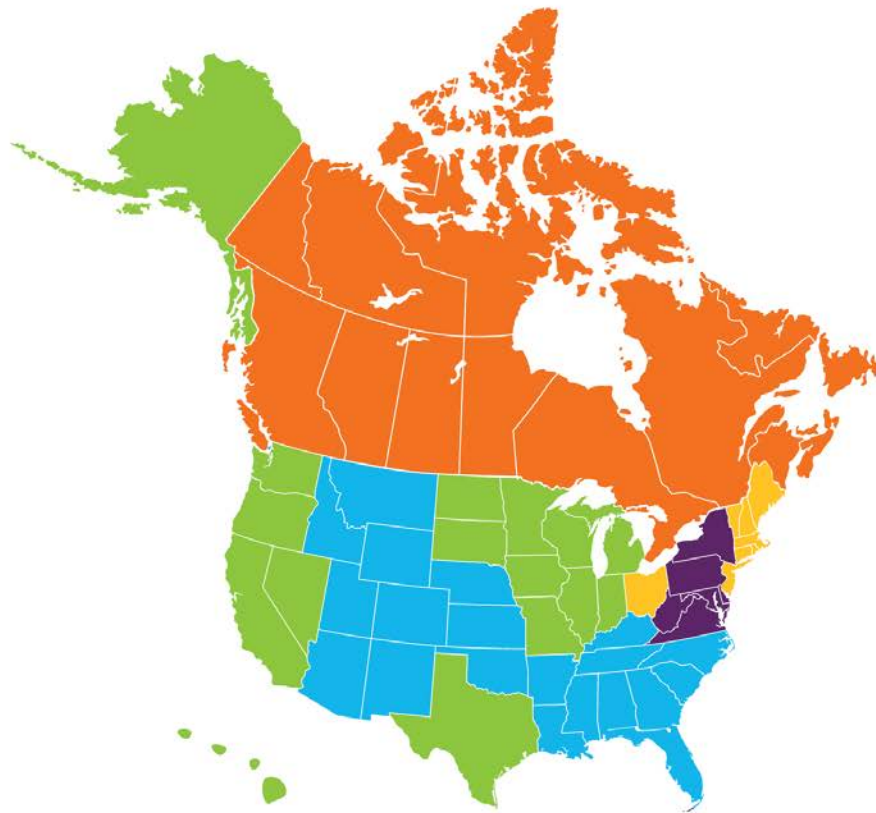


Welcome to WES Webinars!



Canada



Kevin Kamal
kkamal@wes.org
+1 (416) 972-1616

U.S.



Lorinda Grogg
lgrogg@wes.org
1-312-222-0336



Michael Hearne
mhearne@wes.org
1-646-759-8369



Mary Beth Sowa
msowa@wes.org
1-202-331-2928



Indira Marte
imarte@wes.org
1-212-219-7303



Knowledge
Resource
Exchange

Education in Brazil

Presented by

Carlos Monroy

Area Specialist

Knowledge Resource Exchange Webinars 2015

World Education Services

CELEBRATING
40 YEARS
of ADVANCING
INTERNATIONAL
MOBILITY



What WES Does

Advances the global mobility and integration of people into academic and professional setting by:

- Advocating for recognition of international education qualifications
- Empowering individuals to utilize their educational credentials



What WES Does

As part of not-for-profit mission, WES provides valuable resources to the higher education community:

- Knowledge Resource Exchange
<http://www.wes.org/educators/kre.asp>
- World Education News & Review (WENR)
<http://www.wes.org/ewenr/>
- WES Grade Conversion Guide
<http://www.wes.org/gradeconversionguide/>
- WES Research & Advisory Services
<http://www.wes.org/ras/index.asp>



Connect with WES Thought Leadership

Knowledge
Resource
Exchange

- Conferences
 - NAGAP | AACRAO | NAFSA
- Free WES Webinars - Spring 2015:
 - 13 - Knowledge Resource Exchange
<http://www.wes.org/webinars/index.asp>



PRESENTER: CARLOS MONROY

Carlos Monroy has been evaluating international academic credentials at World Education Services (WES) since 2006. He has previously presented his research at various national and international conferences including the Association of International Educators (NAFSA), the National Association of Graduate Admissions Professionals (NAGAP) and the Consortium for North American Higher Education Collaboration (CONAHEC). Mr. Monroy earned his MA in international relations from City University of New York.



Agenda

PART I: Introduction

PART II: Education System of Brazil

PART III: Sample Credentials

PART IV: Q & A

Section I: Introduction



Map of Brazil



BRAZIL

- Population: 202,656,788 (July 2014 est.)
- Administrative divisions:
 - 26 states
 - 1 federal district
- GDP - per capita (PPP): \$12,100 (2013 EST.)
- Median Age: 30.7 (2014 EST.)
- Higher education enrollment: 7,305,977 (2013)

Ciência sem Fronteiras (Science Without Borders)

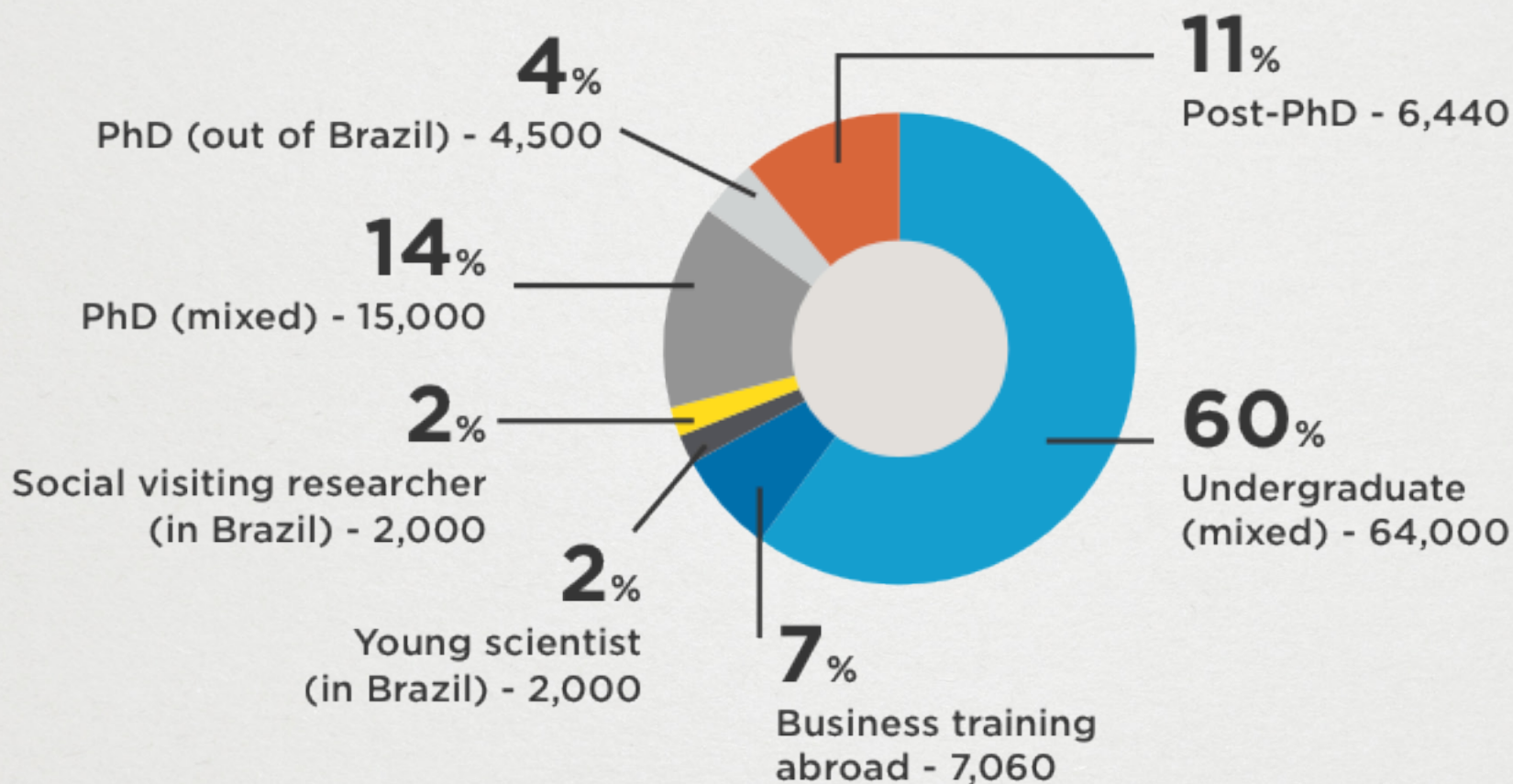
Knowledge
Resource
Exchange



<http://www.cienciasemfronteiras.gov.br>

- Program created in 2011 by the Brazilian government to provide scholarships in scientific research projects abroad
- 75,000 scholarships to be provided by the Brazilian government
- 26,000 scholarships to be provided by the private sector
- Scholarships to be distributed from 2011-2014

Science Without Borders (2011-2015)



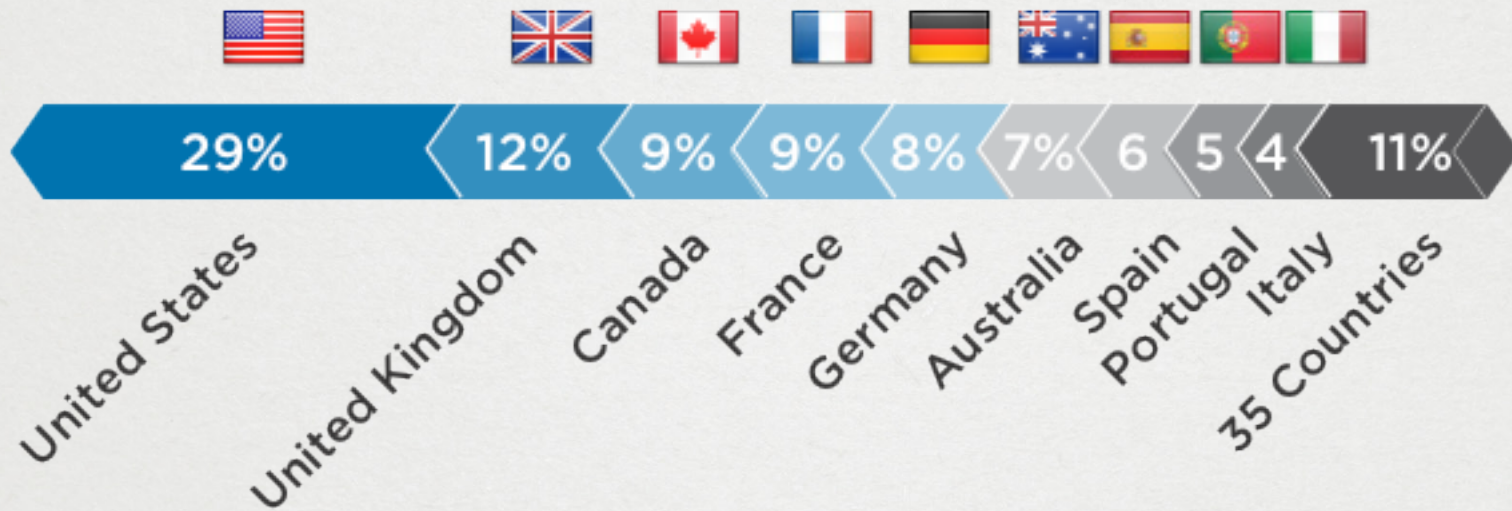
Source: Programa Ciência sem Fronteiras <http://www.cienciasemfronteiras.gov.br>

Implementation Schedule

Year	CNPq			Capes		
	New scholarships per year	Remaining from previous year	Active scholarship holders in the year	New scholarships per year	Remaining from previous year	Active scholarship holders in the year
2010	-	-	500	-	-	5,000
2011	3,890	-	3,890	3,400	3,237	6,637
2012	6,140	250	6,390	10,200	3,400	13,600
2013	10,230	670	10,900	12,200	2,600	14,800
2014	14,740	1,300	16,040	14,200	5,200	19,400
-	35,000	-	-	40,000	-	-

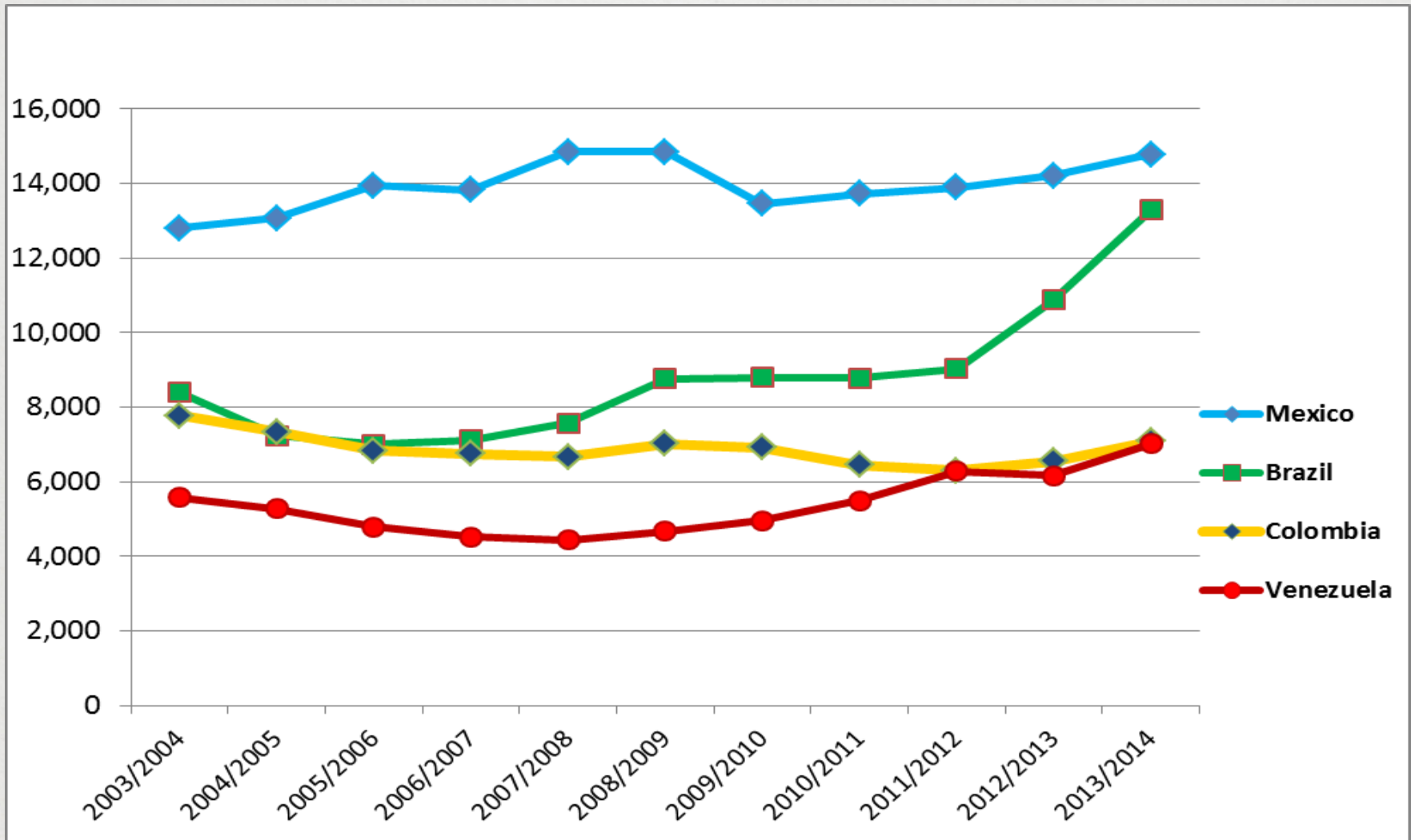
Source: Programa Ciência sem Fronteiras <http://capes.gov.br/bolsas/bolsas-no-externo/ciencia-sem-fronteiras>

Geographic Distribution



Source: Programa Ciência sem Fronteiras <http://www.cienciasemfronteiras.gov.br/web/csf/bolsistas-pelo-mundo>

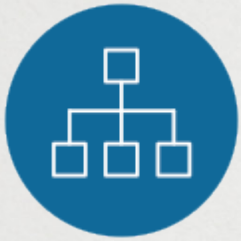
Latin-American Students in USA



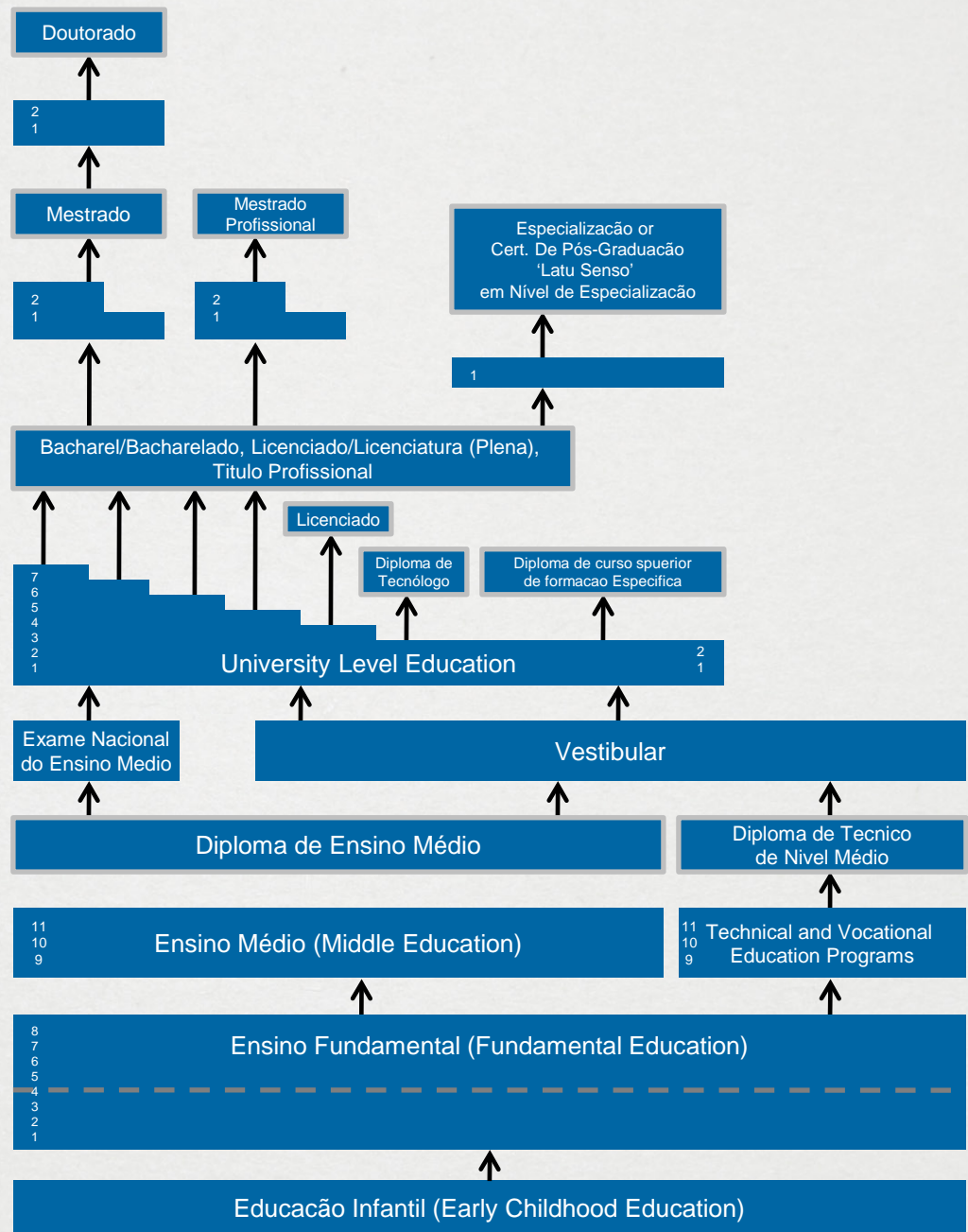
Source: Open doors, IIE, <http://www.iie.org/en/Research-and-Publications/Open-Doors>

Section 2: Education System of Brazil





Brazil: Diagram of Educational System



Source: Australian Government,
Australian Education International
<http://www.aei.gov.au/Pages/default.aspx>

Curriculum

National Curriculum (Parte Comum) 75%
Portuguese Language/ Literature (1)
Physical Education (1)
Art Education (1)
Chemistry (2)
Mathematics (2)
Physics (2)
Biology (2)
History (3)
Geography (3)
Regional Curriculum (Parte Diversificada) 25%
Foreign Language (1)
Sociology (3)
Philosophy (3)
Other(s)*
Computer Science*

Design

- Secondary-level education is structured in 3 years of study and the curriculum is composed of three main areas:
 1. Languages, arts and physical education.
 2. Mathematics, natural sciences and related sciences.
 3. Humanities
- The national curriculum is complemented by coursework designed by each state.
- *Ensino Médio* is comprised of a minimum 2,400 instruction hours (over a 3-year period)

Admission to Higher Education

Academic Credentials

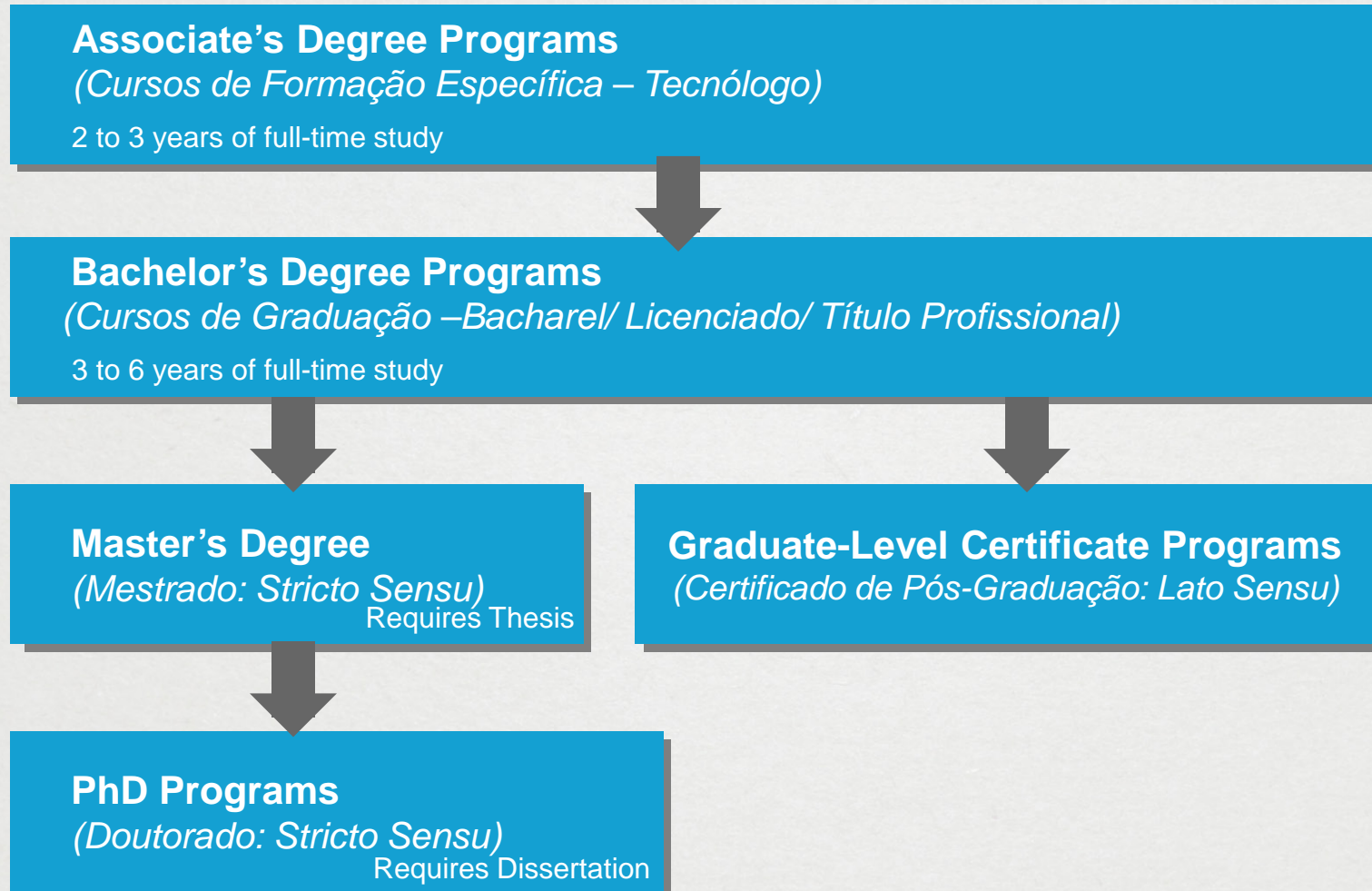
- *Certificado de Conclusão do Ensino Médio*
(Certificate of Completion of Secondary Education)
- *Título de Técnico*
(Title of Technician)

Examinations

- Nationally administered by the educational authorities:
 - *Exame Nacional do Ensino Médio – ENEM: Sistema de Seleção Unificada (SiSU) 2009*
 - Public academic institutions reserve the right to use SiSU as the only/primary secondary entrance examination (in combination/substitution of their own examinations).
 - Institution Specific:
 - Vestibular



Higher Education (Educação Superior)



Higher Education Institutions

Administrative Category (*Categoria Administrativa*)

- *Pública*
 - *Federal Government*
 - *State Government*
 - *Local/ Municipal Government*
- *Privada*
 - *Non-for-profit*
 - *For profit*

Academic Organization (*Organização Acadêmica*)

- *Universidade*
- *Centro Universitário*
- *Faculdade*

Degree Requirements

Undergraduate (*Graduação*):

- Completion of the program (generally about: 2800 instruction hours)
- Professional practice or internship
- Major and/or institution-specific requirements (e.g. foreign language proficiency)

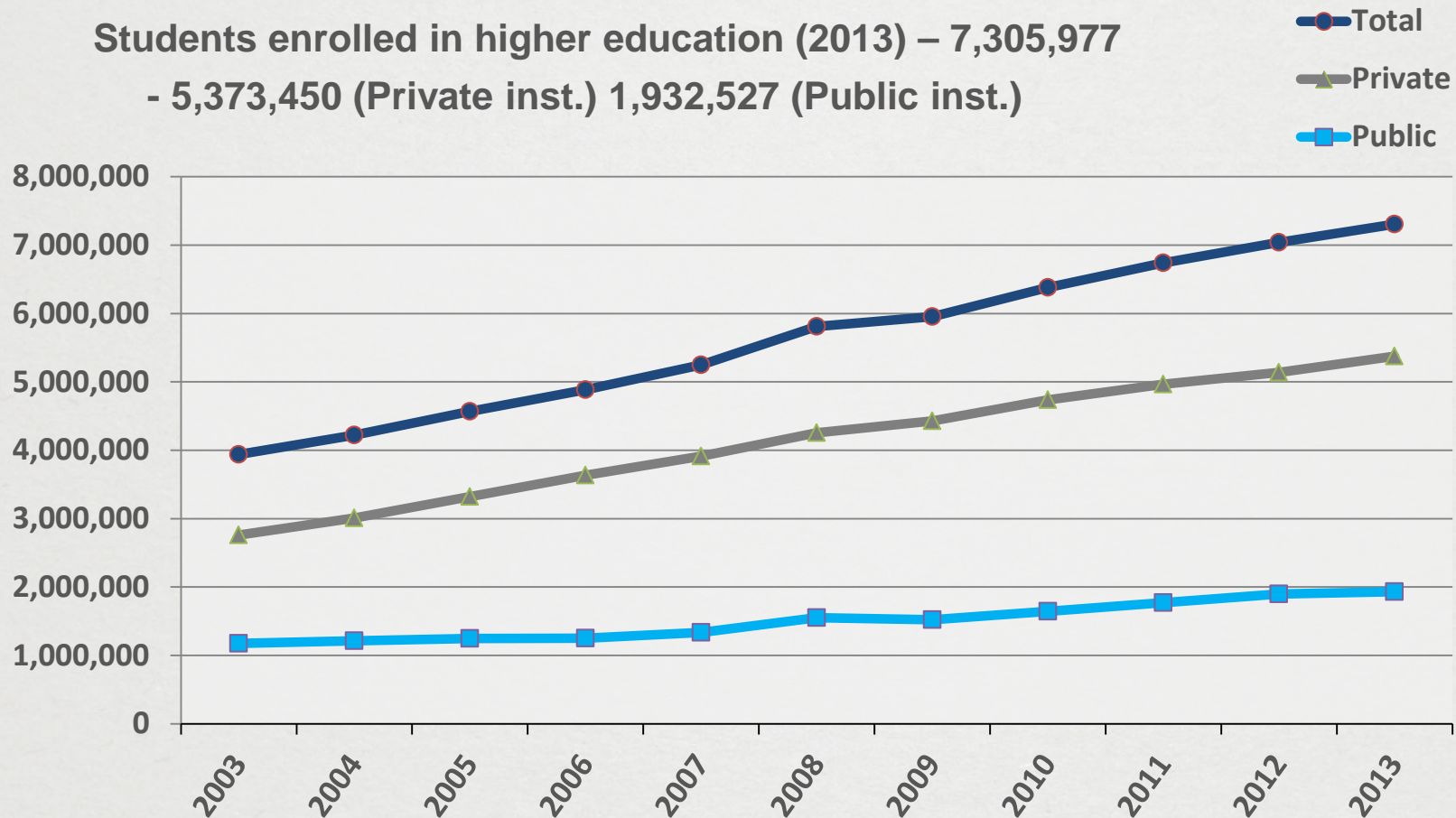
Graduate (*Pos-Graduação*):

- Completion of the course-work
- Thesis and examination (not mandatory in *lato sensu* programs)
- Major/institution-specific



Higher Education Enrollment

Students enrolled in higher education (2013) – 7,305,977
- 5,373,450 (Private inst.) 1,932,527 (Public inst.)



Source: Instituto Nacional de Estudos e Pesquisas Educacionais Anísio Teixeira (INEP) , <http://portal.inep.gov.br/>

- Evaluation of Undergraduate Programs (*Avaliação dos Cursos de Graduação*) under the auspices of INEP (*Instituto Nacional de Estudos e Pesquisas Educacionais*)
 1. Authorization (*Autorização*)
 2. Recognition (*Reconhecimento*)
 3. Renewal of Recognition (*Renovação de Reconhecimento*)

- Evaluation of Graduate Programs (*Avaliação dos Cursos de Pós-Graduação*) -*Stricto Sensu*- under the auspices of CAPES (*Coordenação de Aperfeiçoamento de Pessoal de Nível Superior*)

Brazilian Grading Scale

Scale 1	Scale 2	Description	WES Grade Conversion
8.6-10	SS * (9.0)	<i>Superior</i>	A
6.6-8.5	MS* (7.0)	<i>Médio Superior</i>	B
5-6.5	MM* (5.0)	<i>Médio</i>	C
0-5	MI	<i>Médio Inferior (Reprovação)</i>	F

WES Document Requirements

A) Secondary-level Education:

- Official Portuguese language academic transcript (*Histórico Escolar*) issued and sent to WES by the institution attended.
- Precise, word-for-word, English translation of the Portuguese language academic transcript.

B) Higher Education:

- Official Portuguese language academic transcript (*Histórico Escolar*) issued and sent to WES by the institution attended.
- Precise, word-for-word, English translation of the Portuguese language academic transcript.
- Photocopy of the Portuguese language degree certificate (*Bacharel, Mêsre, Doutor*).



Source: <http://www.wes.org/required/index.asp>

Section 3: Sample Credentials

Sample Documents

- <http://emec.mec.gov.br/>
- <http://www.capes.gov.br/cursos-recomendados>
- [Sample Documents](#)



Links/Useful Resources

- *Ministério da Educação do Brasil - Sistema e-MEC* <http://emec.mec.gov.br/>
- *Coordenação de Aperfeiçoamento de Pessoal de Nível Superior (CAPES)* <http://www.capes.gov.br/cursos-recomendados>
- *Programa Ciência sem Fronteiras* <http://www.cienciasemfronteiras.gov.br>
- *Conselho Nacional de Desenvolvimento Científico e Tecnológico (CNPq)* <http://www.cnpq.br/>
- *Instituto Nacional de Estudos e Pesquisas Educacionais Anísio Teixeira (INEP)* <http://portal.inep.gov.br/>
- *Brazil Science Without Borders Undergraduate Program, IIE* <http://www.iie.org/en/Programs/Brazil-Science-Without-Borders>
- *Open doors, Institute of International Education* <http://opendoors.iienetwork.org/?p=131534>
- *Brazil Science Without Borders Graduate Program (USA); LASPAU* <http://www.laspau.harvard.edu/current-programs/science-without-borders>
- *International Bureau of Education, UNESCO* <http://www.ibe.unesco.org/en/services/online-materials/databases.html>



QUESTIONS AND COMMENTS



Please enter your questions into the chat box to your right (send to Host and Presenter)

THANK YOU FOR
ATTENDING OUR SESSION.

Need more information?

Visit: wes.org/educators

WES Resources for Students

Knowledge
Resource
Exchange

Global Talent Bridge

ESL Tool Kit, Pathways to Success Seminars

<http://www.wes.org/community/>

WES Student Advisor

<http://www.wesstudentadvisor.org/>

Free Degree Equivalency

<http://www.wes.org/evaluations/preliminary.asp>

iGPA Calculator

<http://www.wes.org/students/igpacalc.asp>

Who are WES Professional Evaluators

- Seven dedicated teams that focus on major world areas (education systems and language)
- Over 75 evaluators, who speak over 25 languages, keep abreast of developments in education worldwide
- Receive in-depth and continuous training on international educational systems
- Share their expertise through KRE webinars and conference presentations

Did you know?

- KRE delivered 26 webinars in 2013 with over 6,000 attendees
- WES received over 100,000 applications for evaluation in 2013
- WES securely delivers online evaluations to over 1,000 registered institutions
- AICES WES' custom evaluation database contains data on:
 - 200+ countries and jurisdictions
 - 47,000 institutions
 - 12,000 credentials
 - 2,000 grading scales

For support or more information, please contact your WES Regional Director

Knowledge
Resource
Exchange



Kevin Kamal (Canada)

kkamal@wes.org

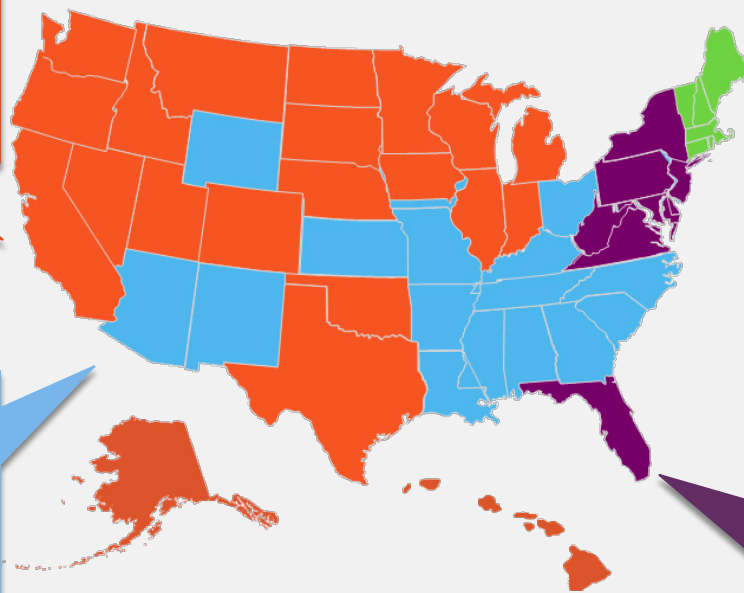
1-416-972-0070 x5225



Lorinda Grogg

lgrogg@wes.org

1-312-222-0336



Jack Nelson

support@wes.org

1-212-219-7330



Indira Marte

imarte@wes.org

1-212-219-7303



Mary Beth Sowa

msowa@wes.org

1-202-331-2928

THANK YOU FOR
ATTENDING OUR SESSION.

Need more information?

Visit: wes.org/educators