



Skilled Immigrant Integration Program Request for Proposals

Overview

WES Global Talent Bridge's **Skilled Immigrant Integration Program (SIIP)** offers communities an opportunity to leverage technical assistance (TA) from WES and its national partners and join a network of communities to further their state and local skilled immigrant integration initiatives.

WES Global Talent Bridge seeks communities, at the state or local level, committed to accelerating the creation and expansion of tested and promising approaches to immigrant professional integration. This program will provide high potential communities with customized training, coaching, and technical assistance to advance concrete initiatives and build sustainable networks to advance state and/or local skilled immigrant integration efforts.

Communities are invited to apply with focus on outcomes that align with four broad themes central to the field of skilled immigrant integration, including:

- Enhancing and improving the workforce development system to better serve internationally-trained immigrants
- Engaging employers in recognizing and leveraging skilled immigrant talent
- Finding the levers in higher education to more fully support skilled immigrants in professional and academic pathways
- Addressing barriers to integration related to professional licensing and regulated professions/occupations

More information on outcomes from previous program years can be found [here](#).

This opportunity is intended to serve local communities already engaged in supporting immigrant professional success through local programs and initiatives. The program is a partnership between communities currently involved in skilled immigrant integration efforts looking to expand their initiatives or move the needle of skilled immigrant integration in new directions. WES Global Talent Bridge will commit staff and expertise of national technical assistance partners, coordinate the program, and provide training and support, as well as connect new and previous SIIP cohorts for peer-learning and exchange. Through this opportunity, WES expects selected communities to commit an engaged state or local network focused on achieving well-defined one-year outcomes with the support of the program's TA providers.

Selected communities will receive:

- 12 hours of coaching and advising provided by WES Global Talent Bridge
- 12 hours of additional customized technical assistance from national experts (see list of TA providers and their areas of expertise [here](#))
- Sponsorship for 3 delegates to participate in a convening in Washington, D.C. on April 1-3, 2020. WES Global Talent Bridge will reimburse all travel, lodging costs, and per diem.
- Four interactive web-based training sessions with WES Global Talent Bridge and other national partners on topics related to skilled immigrant integration
- Monthly calls with WES Global Talent Bridge and participating states and/or cities to share ideas and provide updates on the progress of local efforts
- A platform to regularly collaborate with SIIP peers, a network of 24 state and local multi-sector networks, which includes three active working groups focused on the development of career pathways resources, employer engagement, and data and research

Program Criteria and Expectations

Communities must commit to engaging fully in the training and technical assistance provisions outlined above. Communities will be expected to exchange ideas, share best practices, and learn from TA providers and other communities participating in the program.

Selected communities must demonstrate meaningful participation in a robust network of multi-sector stakeholders with a strong commitment to continue engaging as a community of practice after the conclusion of the program.

Examples of past networks include stakeholders from:

- State and/or local government
- Chambers of commerce/employers
- Workforce development providers and/or workforce boards
- Adult educators/ESL providers
- Higher education institutions
- Refugee resettlement agencies and other immigrant-focused CBOs

The program requires a lead organization to take responsibility for coalescing, convening, and supporting the network and engaging with WES Global Talent Bridge and the other TA providers. Applications with a strong lead in state and local government are encouraged.

- Each community will commit to achieving 2-3 outcomes over the course of the year that will advance skilled immigrant integration efforts locally. These intended outcomes should be identified in the questionnaire and, if the community is selected

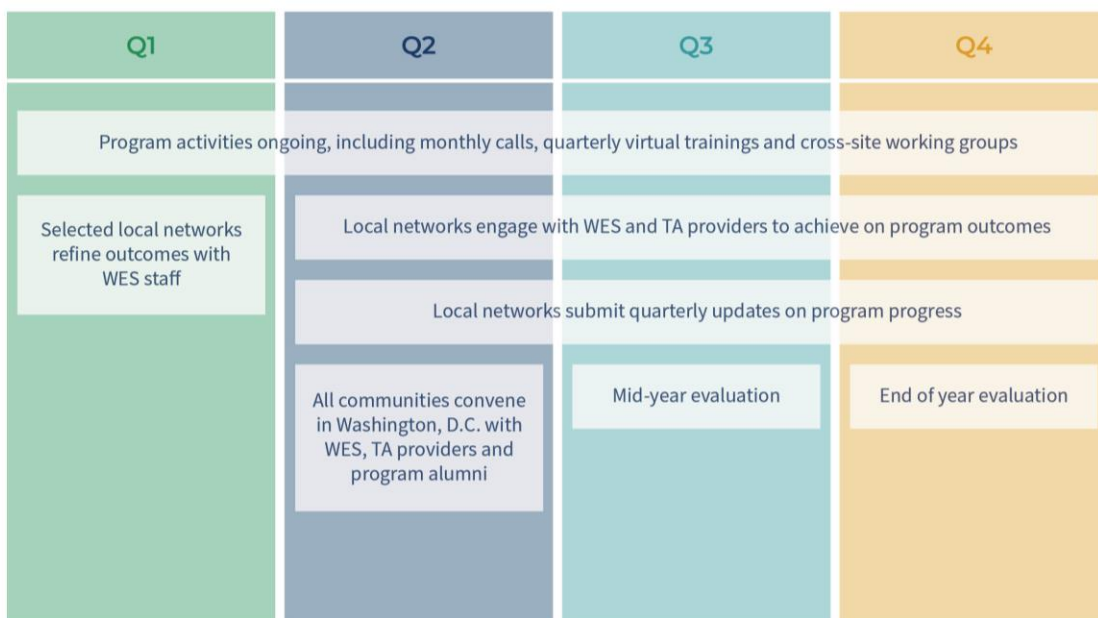
for the program, are subject to be refined and finalized in collaboration with WES Global Talent Bridge staff during the first quarter of the program year.

- Selected communities will be required to participate in all program activities including monthly calls, quarterly trainings, and the in-person convening in Washington, DC.
- Selected communities will be required to update WES Global Talent Bridge staff on progress towards outcomes on a quarterly basis and agree to participate in a rigorous program evaluation process over the course of the program, including participation in focus groups, submission of program logs, and quarterly check-ins.

Project Timeline and Support

WES Global Talent Bridge will select a limited number of communities for this program. The provision of training and technical assistance will begin in January 2020 and end in December 2020. Customized technical assistance from WES Global Talent Bridge and national partners will be accessed throughout the year as arranged in discussion with WES Global Talent Bridge staff. TA is limited to 24 hours per community (12 hours from WES Global Talent Bridge and 12 additional hours from one or more of the national partners). In addition to the customized technical assistance, communities will receive support and coaching through monthly calls and virtual trainings. Finally, WES Global Talent Bridge will reimburse travel and lodging expenses for 3 delegates to attend a three full day convening in Washington, D.C., April 1-3, 2020. Communities are required to send a delegation to the convening.

The program timeline and milestones are as follows:





Questions and Updates

To apply for the program, please submit [this questionnaire](#) by **December 4, 2019**.

Communities may be asked to participate in a brief screening call as part of the selection process. WES Global Talent Bridge will host a Call for Information on **November 13, 2019 2:00-3:00pm EST**. Interested communities are encouraged to join the call. You can [register for the call here](#). The call will be recorded if you are unable to attend. Please reach out to Senay Gebremedhin (sgebreme@wes.org) if you would like a recording of the call or more general information about the program.

Applicants will be informed about acceptance to the program by mid-December.

About WES Global Talent Bridge

WES Global Talent Bridge is committed to the academic, professional, and economic integration of immigrants into local communities. Global Talent Bridge is a program of World Education Services (WES), a non-profit social enterprise that for over 40 years has helped immigrants gain recognition for their academic qualifications earned abroad. In pursuit of WES's stated mission to advocate for the recognition of international educational qualifications and to enable individuals to fully utilize their education in the US, WES Global Talent Bridge offers support and expertise through programming and partnerships with government agencies, academic institutions, immigrant service organizations, and others working in the field of immigrant integration.

About WES' Skilled Immigrant Integration Program TA Partners

See attached Technical Assistance Provider [Menu](#) for more information.